

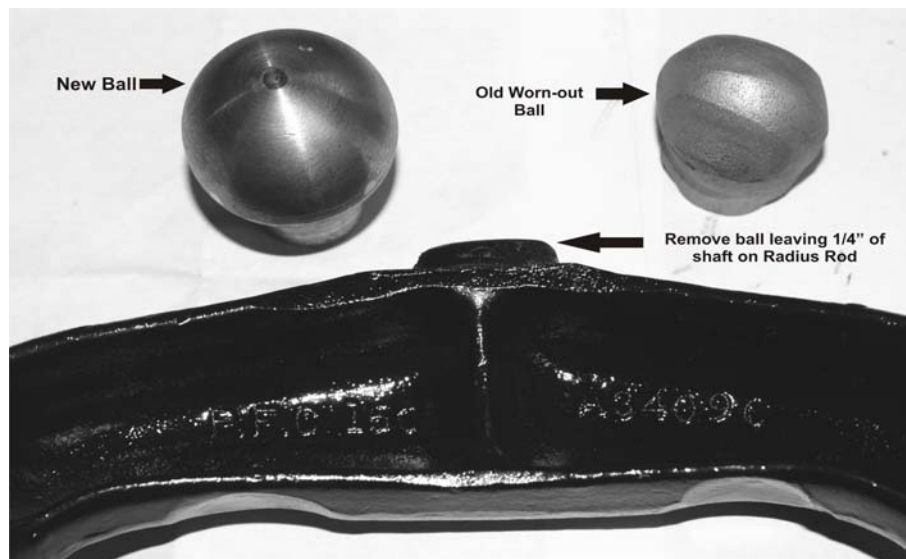
## L.M. Front Radius Rod Replacement kit for 1930 & 1931 Model A Ford

A worn ball can cause shimmy problems as well as retard braking action. There is nothing better than an original ball and socket. This new ball is manufactured to original OEM specifications for size and diameter using high grade hardened steel.

The ball will fit 1930 & 1931 Model A Fords. **You must be sure to follow the directions for the correct car year!** To make the new ball fit like new, I recommend you put in a new socket, studs & springs, and nuts.

### 1930 & 1931 Model A Ford Directions

1. Remove radius rod from car.
2. Stand radius rod on floor with ball facing upwards and measure from floor to top of ball. (write down this dimension)
3. Carefully cut ball from radius rod 1/4 inch up the shank.
4. Grind or file to fit. Carefully line up new assembly, centering ball, and clamp in place.
5. Stand radius rod on floor and check measurement from floor to top of ball, should be the same as in step #2.
6. Tack weld assembly to radius rod. **\*\*NOTE\*\*** be sure to place (2) tack weld on top of assembly and (2) tack weld on bottom of assembly on opposite side. **DO NOT FINISH WELD.**
7. Reinstall unit in car using a new radius rod ball cap, spring, and nuts and tighten slightly to seat ball.
8. When everything fits properly remove unit from car and weld all around. Let unit cool, finish and paint. **BE SURE TO COAT ENTIRE BALL WITH GREASE, OR ANTI-SEIZE, BEFORE FINAL ASSEMBLY**



**HAPPY TOURING**

**Patent Pending**